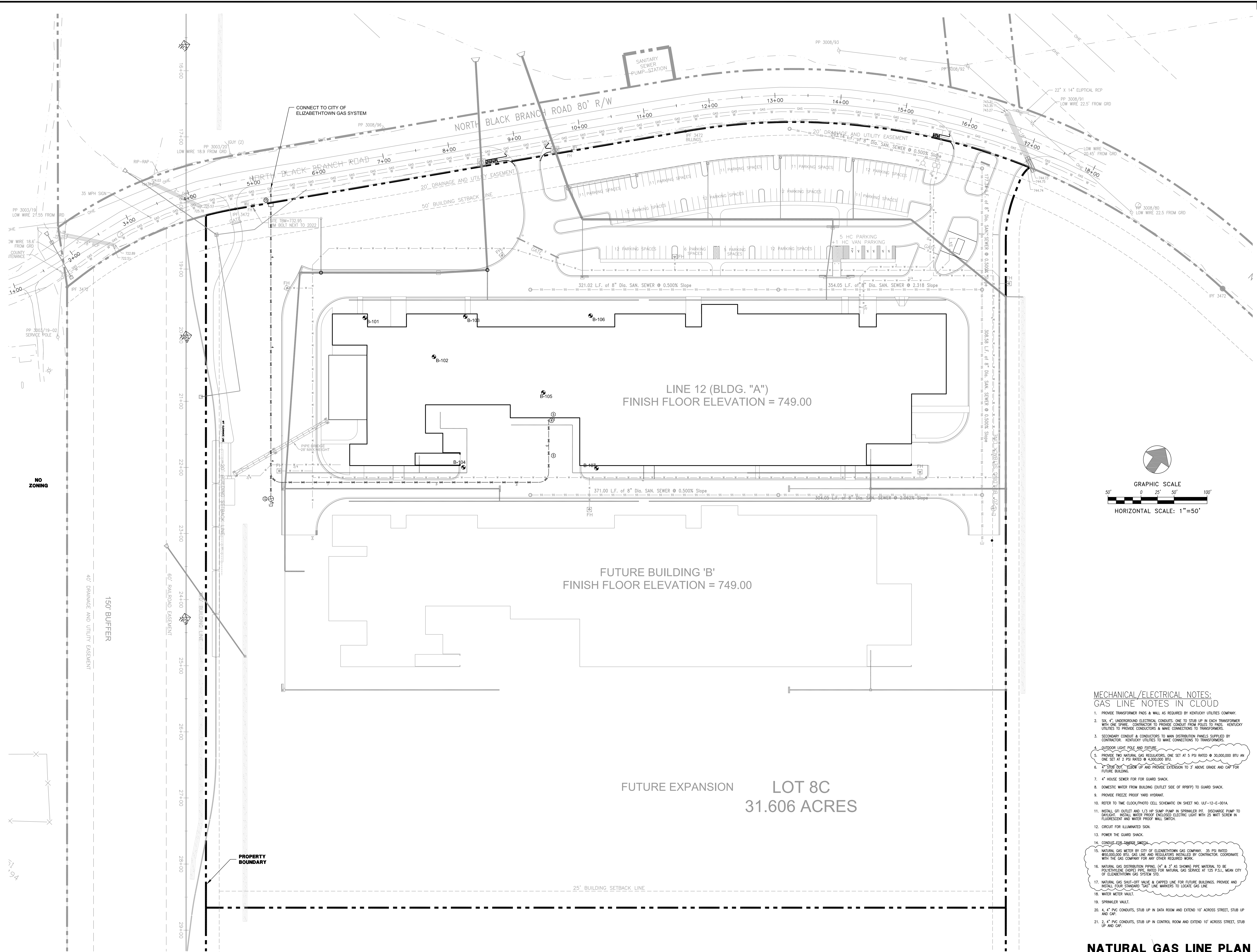


OCT. 21. X:\2064-25 FLEX FILM - ELIZABETHTOWN INDUSTRIAL PARK_C-113 SITE NATURAL GAS LINE PLANDINGS



NO ZONING

40' DRAINAGE AND UTILITY EASEMENT
150' BUFFER

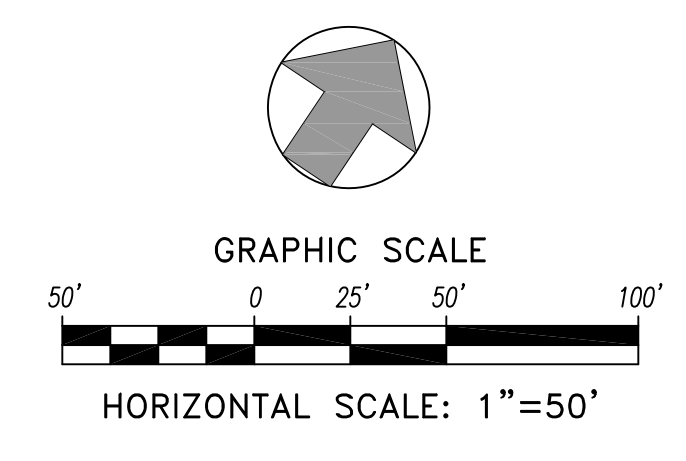
NO BUILDING SETBACK LINE
60' RAILROAD EASEMENT

PROPERTY BOUNDARY

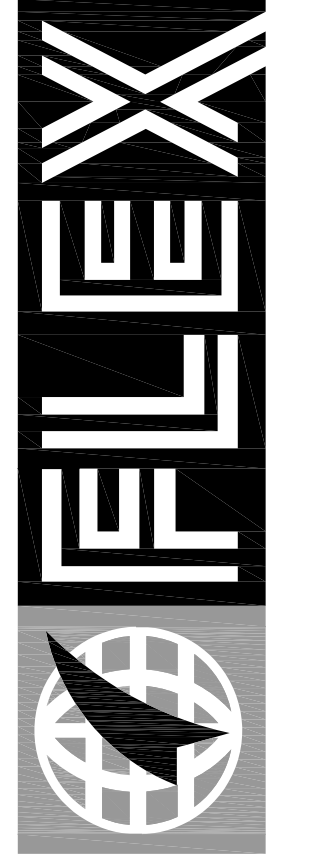
LINE 12 (BLDG. "A")
FINISH FLOOR ELEVATION = 749.00

FUTURE BUILDING 'B'
FINISH FLOOR ELEVATION = 749.00

FUTURE EXPANSION
LOT 8C
31.606 ACRES



- MECHANICAL/ELECTRICAL NOTES:
GAS LINE NOTES IN CLOUD**
- PROVIDE TRANSFORMER PADS & WALL AS REQUIRED BY KENTUCKY UTILITIES COMPANY.
 - SIX (6) 4" UNDERGROUND ELECTRICAL CONDUITS, ONE TO STUB UP IN EACH TRANSFORMER WITH ONE SPARE. CONTRACTOR TO PROVIDE CONDUIT FROM PILES TO PADS. KENTUCKY UTILITIES TO PROVIDE CONDUITORS & MAKE CONNECTIONS TO TRANSFORMERS.
 - SECONDARY CONDUIT & CONDUITORS TO MAIN DISTRIBUTION PANELS SUPPLIED BY CONTRACTOR. KENTUCKY UTILITIES TO MAKE CONNECTIONS TO TRANSFORMERS.
 - OUTDOOR LIGHT POLE AND FIXTURE.
 - PROVIDE TWO NATURAL GAS REGULATORS, ONE SET AT 5 PSI RATED @ 30,000,000 BTU AN ONE SET AT 2 PSI RATED @ 4,500,000 BTU.
 - 4" STUB OUT, ELBOW UP AND PROVIDE EXTENSION TO 3' ABOVE GRADE AND CAP FOR FUTURE BUILDING.
 - 4" HOUSE SEWER FOR GUARD SHACK.
 - DOMESTIC WATER FROM BUILDING (OUTLET SIDE OF RPPFP) TO GUARD SHACK.
 - PROVIDE FREEZE PROOF HYDRANT.
 - REFER TO TIME CLOCK/PHOTO CELL SCHEMATIC ON SHEET NO. UFL-12-E-001A.
 - INSTALL GFI OUTLET AND 1/2 HP SUMP PUMP IN SPRINKLER PIT. DISCHARGE PUMP TO DRAINAGE. INSTALL WATER PROOF ENCLOSED ELECTRIC LIGHT WITH 25 WATT SCREW IN FLUORESCENT AND WATER PROOF WALL SWITCH.
 - CIRCUIT FOR ILLUMINATED SIGN.
 - POWER THE GUARD SHACK.
 - CONDUIT FOR TAMPER SWITCH.
 - NATURAL GAS METER BY CITY OF ELIZABETHTOWN GAS COMPANY. 35 PSI RATED @50,000,000 BTU. GAS LINE AND REGULATORS INSTALLED BY CONTRACTOR. COORDINATE WITH THE GAS COMPANY FOR ANY OTHER REQUIRED WORK.
 - NATURAL GAS DISTRIBUTION PIPING (4" & 3" AS SHOWN) PIPE MATERIAL TO BE POLYETHYLENE (PE) PIPE, RATED FOR NATURAL GAS SERVICE AT 125 P.S.I., MAIN CITY OF ELIZABETHTOWN GAS SYSTEM STD.
 - NATURAL GAS SHUT-OFF VALVE & CAPPED LINE FOR FUTURE BUILDINGS. PROVIDE AND INSTALL FOUR STANDARD "GAS" LINE MARKERS TO LOCATE GAS LINE.
 - WATER METER VAULT.
 - SPRINKLER VAULT.
 - 4, 4" PVC CONDUITS, STUB UP IN DATA ROOM AND EXTEND 10' ACROSS STREET, STUB UP AND CAP.
 - 2, 4" PVC CONDUITS, STUB UP IN CONTROL ROOM AND EXTEND 10' ACROSS STREET, STUB UP AND CAP.



FLEX FILMS (U.S.A.) INC.
1221 NORTH BLACK BRANCH ROAD
ELIZABETHTOWN, KENTUCKY 42702

PROJECT L-12 BOPET U.S.A.

DATE	BY	REVISION
10-2011	A.G.	POST BID REVISIONS

DESIGNED BY: G.A.R.
DRAWN BY: J.R.M.
CHECKED BY: G.A.R.
REVIEWED BY: G.A.R.
DATE: JUNE 2011
SCALE: AS SHOWN

nse
OF KENTUCKY, INC.
624 Wallington Way
Lexington, KY 40503
www.nseinc.com
Phone: (859)223-5684
Fax: (859)223-2607

DRAWING NO.
UFL-L12
C-113

NATURAL GAS LINE PLAN