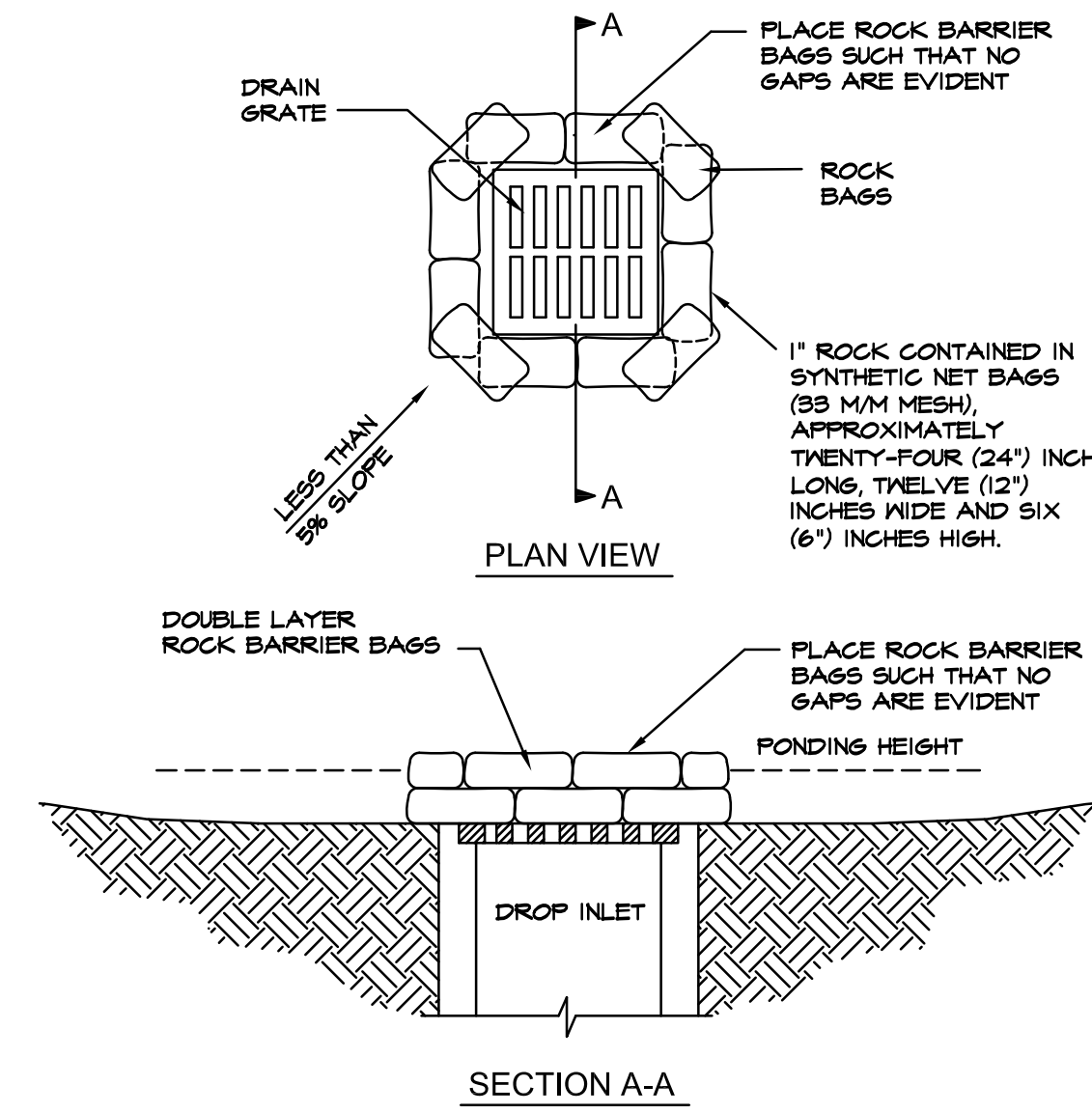
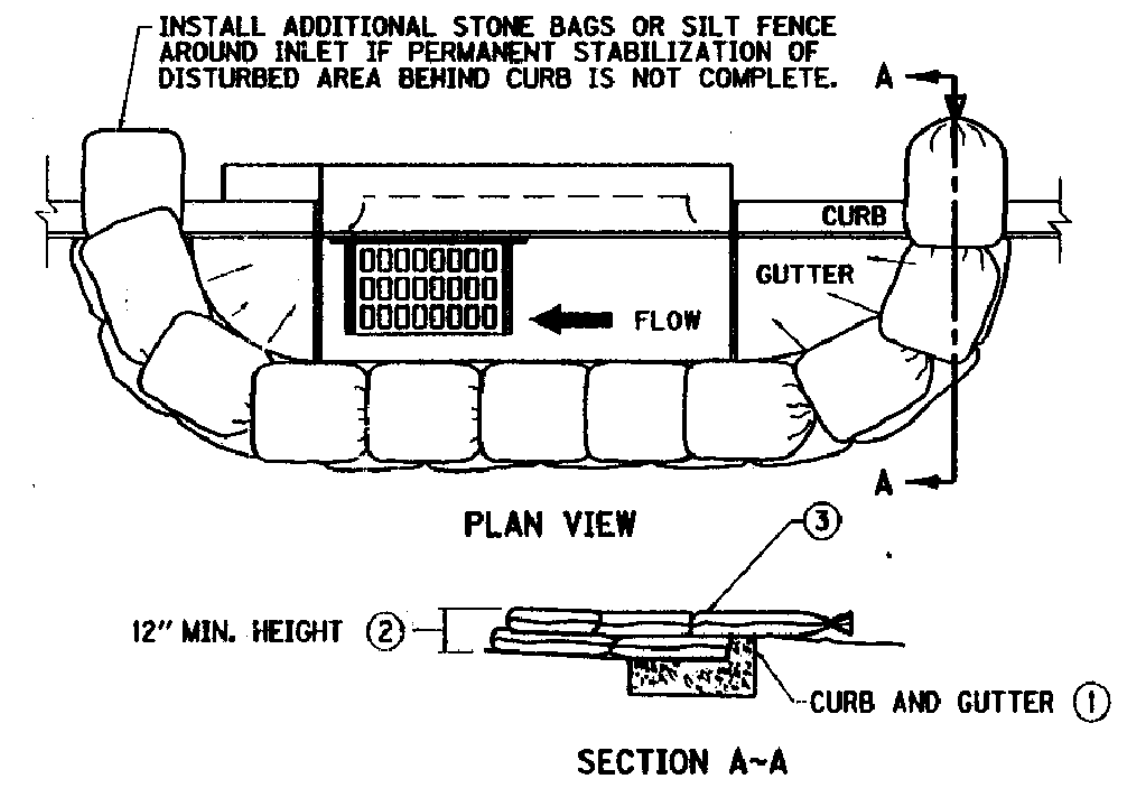
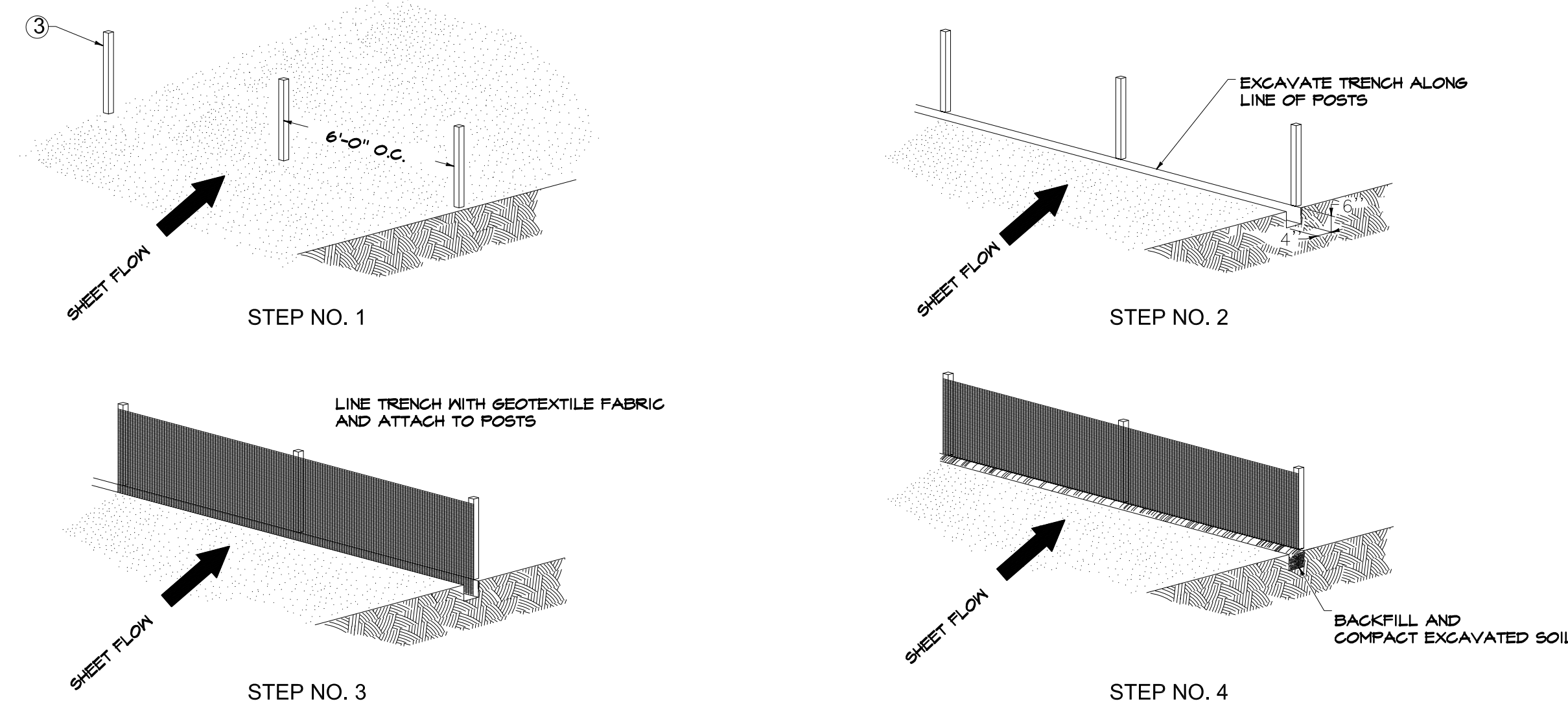


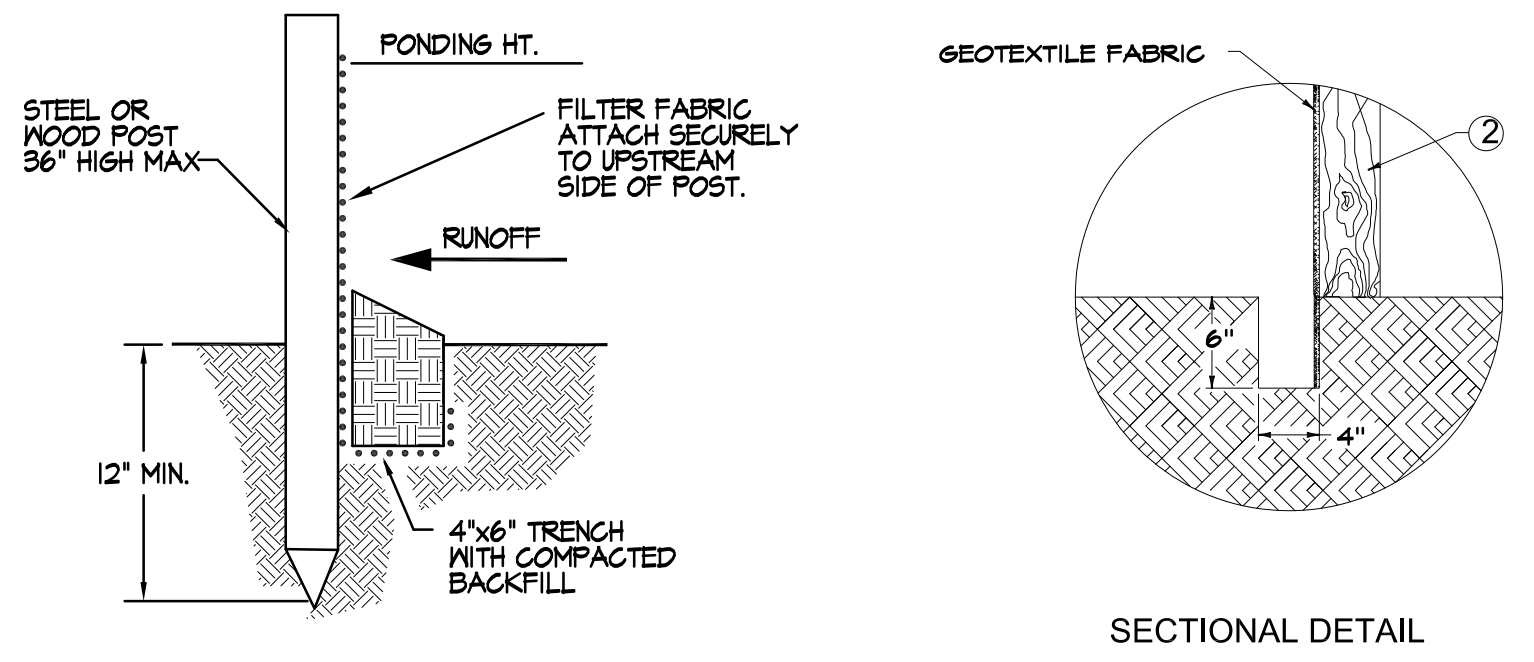
**NOTES:**  
1. THE ENTRANCE SHALL BE MAINTAINED IN A CONDITION THAT WILL PREVENT TRACKING OR FLOWING OF SEDIMENT ONTO PUBLIC RIGHTS-OF-WAY. THIS MAY REQUIRE TOP DRESSING, REPAIR AND/OR CLEANOUT OF ANY MEASURES USED TO TRAP SEDIMENT.  
2. WHEN NECESSARY, WHEELS SHALL BE CLEANED PRIOR TO ENTRANCE ONTO PUBLIC RIGHT-OF-WAY.  
3. WHEN WASHING IS REQUIRED IT SHALL BE DONE ON AN AREA STABILIZED WITH CRUSHED STONE THAT DRAINS INTO AN APPROVED SEDIMENT TRAP OR SEDIMENT BASIN.



**DROP BOX INLET PROTECTION NOTE:**  
ALL INLET & OUTLET PROTECTION TO BE IN CONFORMANCE WITH THE KENTUCKY EROSION PREVENTION AND SEDIMENT CONTROL FIELD GUIDE  
**SILT TRAP TYPE "C"**  
N.T.S.



**NOTES**  
1. SEE STANDARD SPECIFICATIONS FOR POST SIZE, GEOTEXTILE FABRIC, WIRE STAPLES AND ALL OTHER PERTINENT INFORMATION.  
2. POSTS MAY BE WOODEN OR METAL T-SECTION.  
3. POSTS SHALL BE SET 1'-4" DEEP.  
4. INSPECT AND REPAIR FENCE AFTER EACH STORM EVENT AND REMOVE SEDIMENT WHEN NECESSARY.  
5. REMOVED SEDIMENT SHALL BE DEPOSITED TO AN AREA THAT WILL NOT CONTRIBUTE SEDIMENT OFF-SITE AND CAN BE PERMANENTLY STABILIZED.  
6. SILT FENCE SHALL BE PLACED ON SLOPE CONTOURS TO MAXIMIZE PONDING EFFICIENCY.



**TEMPORARY SILT FENCE DETAIL**  
N.T.S.

**EROSION CONTROL NOTES:**

NOTE: THE EROSION CONTROL MEASURES NOTED BELOW ARE MINIMUMS AND DO NOT RELIEVE THE CONTRACTOR FROM THE RESPONSIBILITY FOR COMPLIANCE WITH ANY AND ALL U.S. EPA, KENTUCKY DIVISION OF WATER AND/OR LOCAL REQUIREMENTS.

CONTRACTOR SHALL ESTABLISH EROSION CONTROL MEASURES BEFORE DISTURBING SITE. EROSION CONTROL MEASURES MUST COMPLY WITH THE CITY OF ELIZABETHOWN EROSION PREVENTION AND SEDIMENTATION CONTROL ORDINANCE NO. 01-2007 WHICH IS INCLUDED IN THESE DOCUMENTS BY REFERENCE.

ALL EROSION CONTROL DEVICES SHALL BE PROPERLY MAINTAINED DURING ALL PHASES OF CONSTRUCTION UNTIL THE COMPLETION OF ALL CONSTRUCTION ACTIVITIES AND ALL DISTURBED AREAS HAVE BEEN STABILIZED.

ADDITIONAL CONTROL DEVICES MAY BE REQUIRED DURING CONSTRUCTION, IN ORDER TO CONTROL EROSION AND/OR OFFSITE SEDIMENTATION. ALL TEMPORARY CONTROL DEVICES SHALL BE REMOVED ONCE CONSTRUCTION IS COMPLETED AND THE SITE IS STABILIZED.

IT IS THE CONTRACTOR'S RESPONSIBILITY TO PREVENT EROSION ONTO ADJACENT PROPERTY. ANY REMEDIAL MEASURES REQUIRED TO CORRECT DAMAGE CREATED BY EROSION SHALL BE AT THE CONTRACTOR'S EXPENSE.

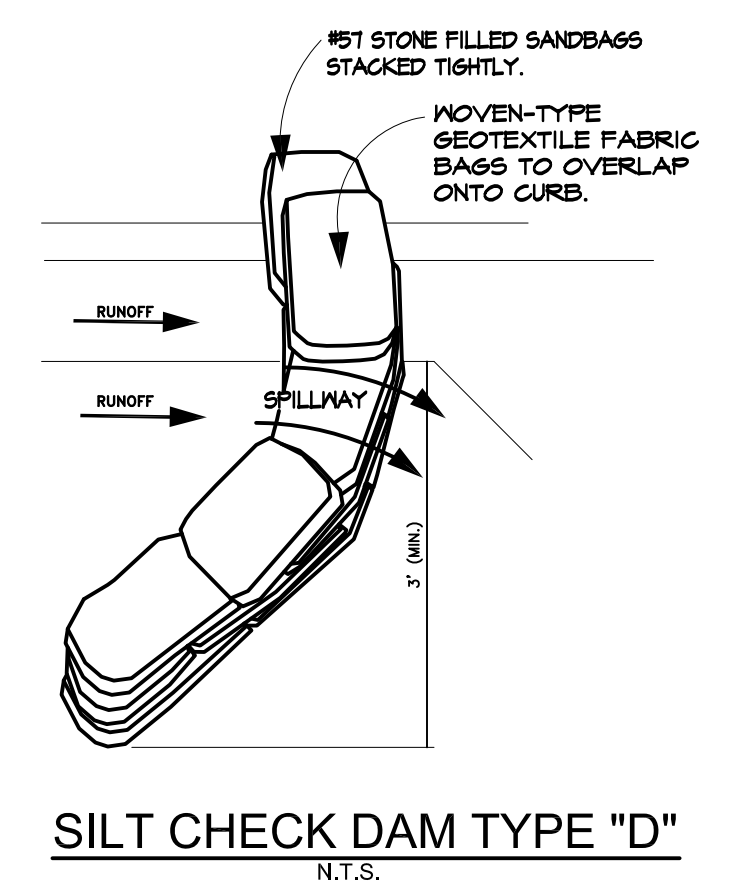
TOPSOIL STOCKPILES THAT ARE NOT BEING UTILIZED FOR A PERIOD OF 14 DAYS TO BE SURROUNDED BY SILT FENCES RESEEDED AND PLACED WHERE SOIL EROSION WOULD GO TO THE SEDIMENT BASINS.

SILT FENCES TO BE CLEANED OUT WHEN THEY BECOME ONE-THIRD FULL.

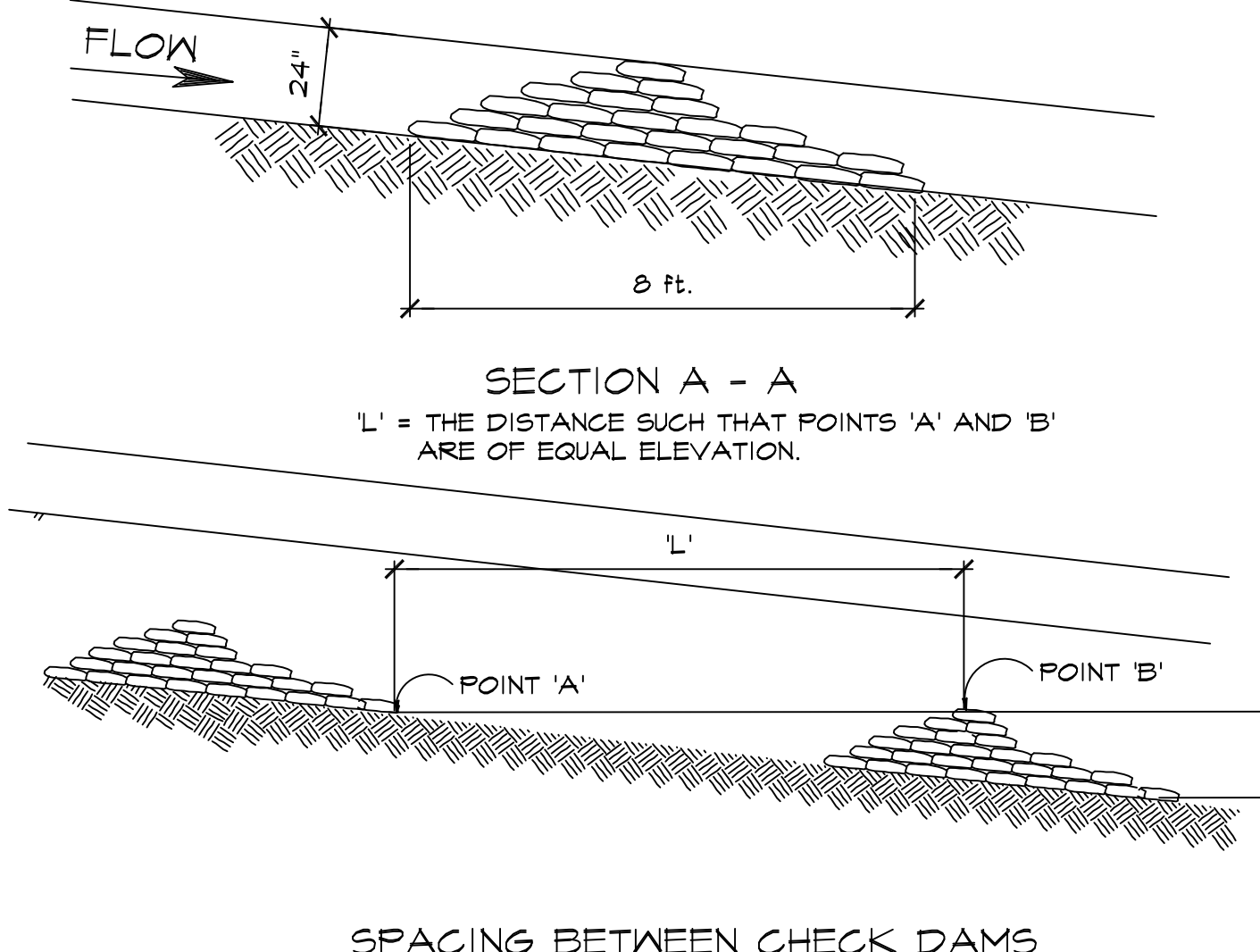
WHEN SEASONAL CONDITIONS PROHIBIT THE APPLICATION OF TEMPORARY OR PERMANENT SEEDING, NON-VEGETATIVE SOIL STABILIZATION PRACTICES SUCH AS MULCHING AND MATTING SHALL BE USED, UNTIL SUCH TIME AS CONDITIONS PERMIT.

THE CONTRACTOR SHALL BE RESPONSIBLE FOR KEEPING ALL STORM SEWERS CLEANED OF SILT AND DEBRIS AND FUNCTIONING PROPERLY.

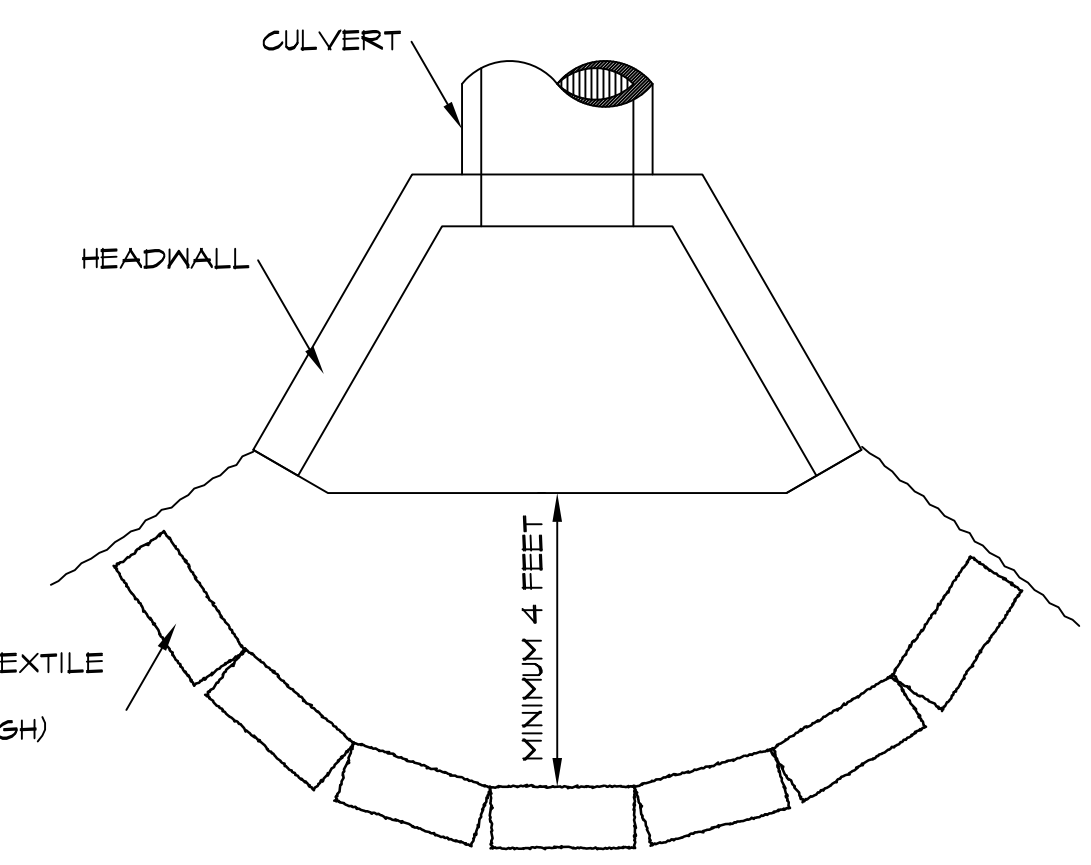
CURB INLETS SHALL BE PROTECTED BY GEOTEXTILE FABRIC BAGS FILLED W/ #57 STONE. BAGS SHALL LAP THE JOINTS BETWEEN THE BAGS BELOW.



STONE FILLED BAG CHECK DAMS MUST BE PLACED IN CHANNEL BY HAND, WITH THE TIED ENDS OF THE BAGS POINTING UPSTREAM AND THE CENTER OVERFLOW AREA AT LEAST 6" LOWER THAN THE OUTER EDGE. THE HIGHER ENDS OF THE CHECK DAM MUST TIE TO THE CHANNEL TO PREVENT BYPASS.



**SILT CHECK DAM TYPE "D"**  
N.T.S.



ALL SEDIMENT CONTROL MEASURES SHALL BE INSPECTED AT LEAST ONCE EVERY SEVEN DAYS AND AFTER ANY STORM EVENT OF GREATER THAN 0.5 INCHES OF PRECIPITATION DURING ANY 24-HOUR PERIOD. A FIELD LOG OF INSPECTIONS SHALL BE MADE AND A COPY GIVEN TO THE OWNER.

ALL SEDIMENT CONTROL FEATURES SHALL BE MAINTAINED UNTIL FINAL SOIL STABILIZATION HAS BEEN OBTAINED.

CONTRACTOR SHALL PROVIDE A CONCRETE WASHOUT STRUCTURE OR AREA UPSTREAM OF THE DETENTION BASIN IN ACCORDANCE WITH FEDERAL, STATE AND LOCAL REQUIREMENTS. THE LOCATION OF THE CONCRETE WASHOUT STRUCTURE/AREA SHALL BE APPROVED BY THE ENGINEER AND DESIGNATED ON THE SWPPP.

STABILIZATION MEASURES SHALL BE INITIATED AS SOON AS PRACTICAL IN PORTIONS OF THE SITE WHERE CONSTRUCTION ACTIVITIES HAVE TEMPORARILY OR PERMANENTLY CEASED, BUT NO MORE THAN 14 DAYS AFTER THE CONSTRUCTION ACTIVITY IN THAT PART OF THE SITE HAS TEMPORARILY OR PERMANENTLY CEASED UNLESS THAT ACTIVITY IN THAT PORTION OF THE SITE WILL RESUME WITHIN 21 DAYS.

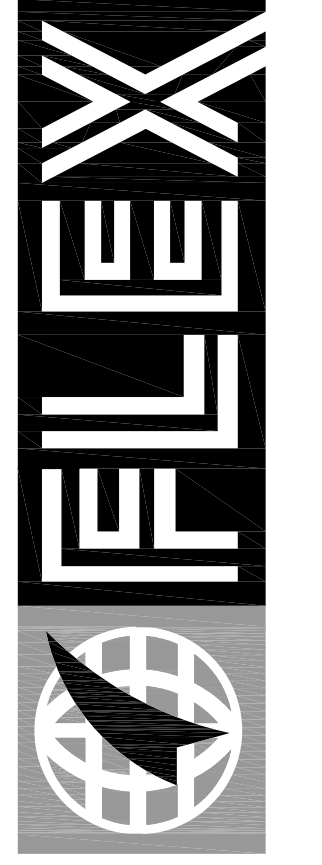
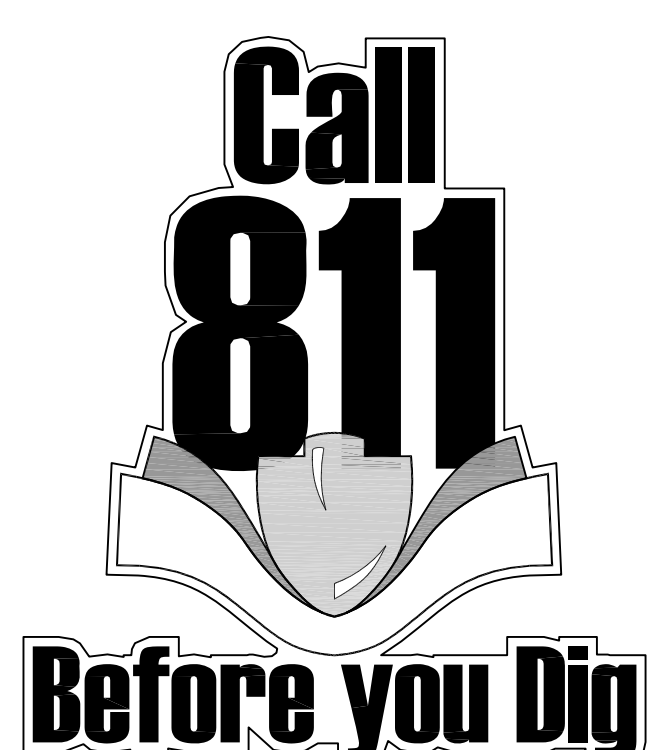
THE CONTRACTOR MUST TAKE NECESSARY ACTION TO MINIMIZE TRACKING OF MUD ONTO PAVED ROADWAY FROM CONSTRUCTION AREAS. THE CONTRACTOR SHALL DAILY REMOVE MUD/SOIL FROM PAVEMENT, AS MAY BE REQUIRED.

PROVIDE TRAFFIC CONTROL IN ACCORDANCE WITH THE MANUAL FOR UNIFORM TRAFFIC CONTROL DEVICES AND THE KENTUCKY DEPARTMENT OF HIGHWAYS GUIDANCE MANUAL.

MAINTAIN ACCESS TO EXISTING BUSINESSES AND EXISTING ROADS.

ALL EARTHWORK TO COMPLY WITH KENTUCKY DEPT. OF HIGHWAYS (KY-DOH SECTION 400) SPECIFICATIONS FOR ROAD AND BRIDGE CONSTRUCTION, EDITION OF 2000 AND ANY AMENDMENTS.

THE CONTRACTOR SHALL LIMIT ACCESS TO THE SITE TO THE CONSTRUCTION ENTRANCES. THE LOCATION OF THE CONSTRUCTION ENTRANCES SHALL BE APPROVED BY THE ENGINEER AND DESIGNATED ON THE SWPPP. THE CONTRACTOR SHALL INSTALL STONE SURFACE AT THE LOCATION WHERE CONSTRUCTION TRAFFIC LEAVES AND ENTERS THE SITE. THESE ACCESS POINTS SHALL BE MIN. 20' WIDE, 50' LONG, 0.5' DEEP AND USE NO 7 STONE OVER GEOTEXTILE FABRIC. THE CONTRACTOR IS RESPONSIBLE FOR KEEPING STREETS AND PARKING AREAS FREE FORM MUD, DIRT, DEBRIS, AND ROCK. DUST SHALL BE KEPT TO A MINIMUM BE UTILIZING SPRINKLING, CALCIUM CHLORIDE, VEGETATIVE COVER, SPRAY ON ADHESIVES OR OTHER APPROVED METHODS. THIS ENTRANCE SHALL BE MAINTAINED UNTIL THE STREET HAS BEEN CONSTRUCTED.



**FLEXFILMS, U.S.A., LLC**  
1221 NORTH BLACK BRANCH ROAD  
ELIZABETHOWN, KENTUCKY 42020  
PROJECT L-12 BOPET U.S.A.

DATE	REVISION	BY

PROJECT NO. 2064-25  
DESIGNED BY E.G.M.  
DRAWN BY J.R.M.  
CHECKED BY E.G.M.  
REVIEWED BY E.G.M.  
DATE JULY 2011  
SCALE AS SHOWN

**nse**  
OF KENTUCKY, INC.  
624 Wellington Way  
Lexington, KY 40503  
www.nseinc.com  
Engineers  
Architects  
Planners  
Phone: (859)223-5664  
Fax: (859)223-2607

**DRAWING NO.**  
UFL-L12  
C103.2

**EROSION CONTROL - DETAILS**

JUL 30 10:26:42-25 FLEX FILM - ELIZABETHOWN, TJ PATTERSON INDUSTRIAL PARK, C-103.2 EROSION CONTROL DETAILS.DWG