

DATE	REVISION	BY

PROJECT NO.	DESIGNED BY	S.H.T.	DRAWN BY	J.V.B.	CHECKED BY	T.L.W.	REVIEWED BY	DATE	OCT. 2011	SCALE	AS NOTED
-------------	-------------	--------	----------	--------	------------	--------	-------------	------	-----------	-------	----------



NSE

 OF KENTUCKY, INC.

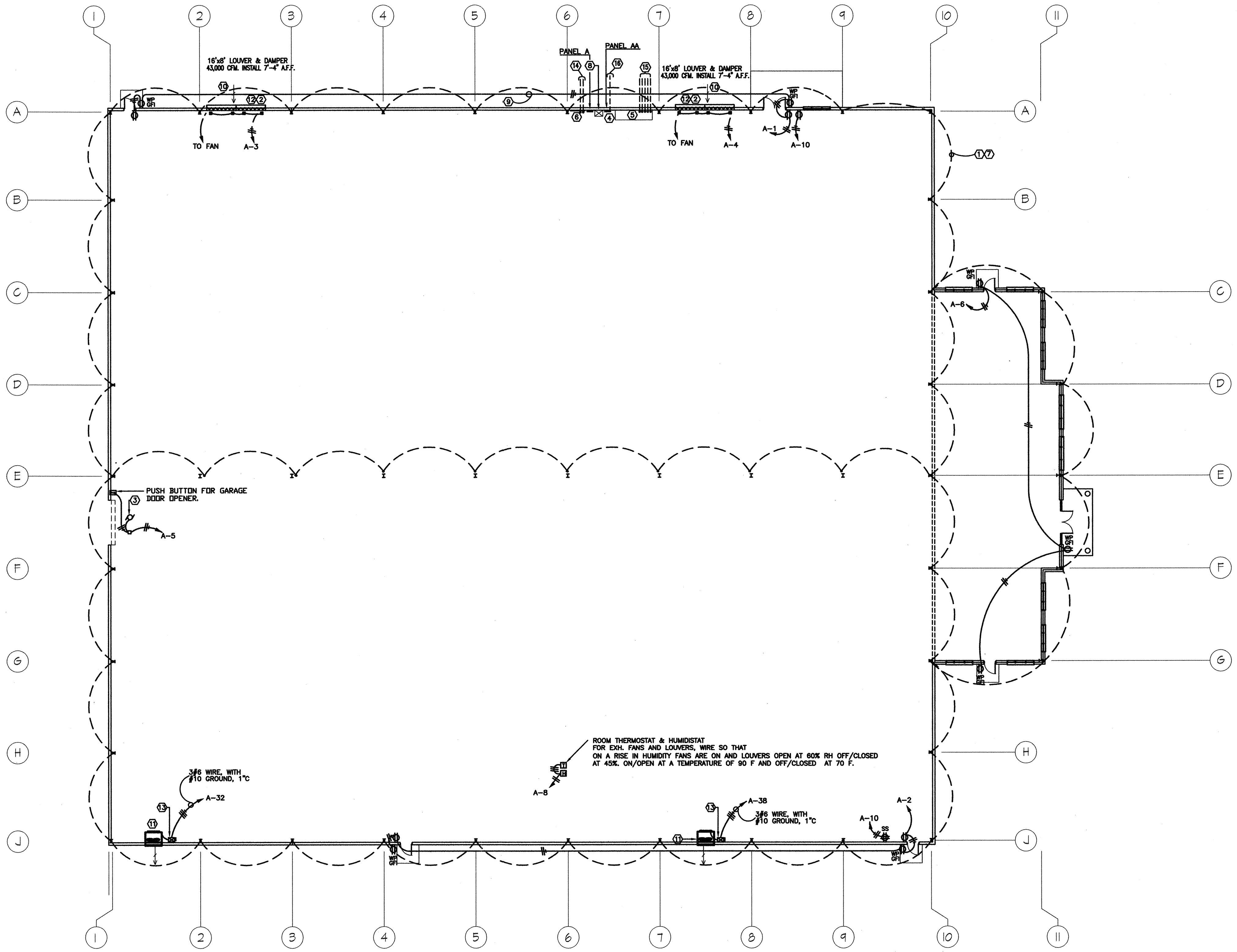
624 Wellington Way

Lexington, KY 40503

www.nsekva.com

Phone: (606) 223-6684

Fax: (606) 223-2607



MECHANICAL and ELECTRICAL FLOOR PLAN

 SCALE: 1/16" = 1'-0"

MECHANICAL EQUIPMENT

EXHAUST FAN SHALL BE AN COOK MODEL # 60XLP
 42,000 CFM @ 0.125 S.P., 7.5 H.P., 410 RPM, 208/3Ø MOTOR WITH ADJ. SHEAVE.
 FURNISH WITH FAN WALL HOUSING, SHUTTER AND PROTECTIVE SCREEN.
 COMPARABLE EQUIPMENT BY COOK, GREENHECK, OR EQUAL WILL BE ACCEPTABLE.

FURNISH AND INSTALL A COMBINATION LOUVER AND DAMPER
 6" DEEP, EXTRUDED ALUMINUM, 45° BLADE, WITH ALUMINUM
 BIRD SCREEN. BLADES SHALL BE PROVIDED WITH SEALS FOR
 MINIMUM AIR LEAKAGE.
 LOUVERS SELECTED: LOUVERS & DAMPERS MODEL DCL-67
 COMPARABLE LOUVERS MFG. BY RUSKIN, AIRLOUT, OR EQUAL
 WILL BE ACCEPTABLE.

SHEET NOTES:

- ① BASE GROUND WIRE NO. 3/0 BARE COPPER BONDED TO EACH COLUMN AS SHOWN. TYPICAL. SEE GROUNDING DETAIL AT COLUMNS, ON SHEET NO. ME-3.
- ② 120 VOLT LOUVER OPERATOR.
- ③ ELECTRICAL CONTRACTOR SHALL PROVIDE AND INSTALL ALL NECESSARY CONTROL WIRING TO DOOR OPENER AND SHALL MOUNT OPERATOR'S STATION AS REQUIRED.
- ④ ATTACH GROUND WIRE TO GROUND LUGS OF INCOMING SERVICE PANEL AA.
- ⑤ MAIN SERVICE PANEL 2000 AMP., 480/277 VOLT, 3 PHASE, 4 WIRE. CONCRETE PAD TO BE 4" THICK BY 54" DEEP, 72" WIDE.
- ⑥ 4'x4' PLYWOOD TELEPHONE BACKBOARD.
- ⑦ GROUNDING/BONDING TO BE BELOW FLOOR SLAB (NOT AS SHOWN ON FLOOR PLAN) TO BE RUN CONTINUOUS TO EACH COLUMN.
- ⑧ 75 KVA, 480-120/208 THREE PHASE TRANSFORMER. TRAPEZE MOUNT AT 10'-0" A.F.F.
- ⑨ CIRCUIT SHALL BE RUN ON INSIDE OF BUILDING. CIRCUIT SHOWN ON OUTSIDE OF BUILDING FOR CLARITY ONLY.
- ⑩ LOUVER SHALL BE FURNISHED & INSTALLED BY THE GENERAL CONTRACTOR. INSTALLED IN A FRAMED OPENING. MECHANICAL CONTRACTOR SHALL PROVIDE A MOTORIZED DAMPER, MINIMUM LEAKAGE, AND AN ELECTRICAL SHAFT MOUNTED LOUVER BLADE OPERATOR INTERLOCKED WITH FAN MOTOR. LOUVER OPERATOR SHALL BE LOCATED WITHIN THE WIDTH OF THE LOUVER. PROVIDE MULTIPLE OPERATORS TO SIMPLIFY LINKAGE.
- ⑪ OPENING THROUGH WALL FOR FAN SHALL BE FRAMED WITH STEEL STRUCTURAL MEMBERS APPROVED BY THE ARCHITECT. PROVIDE FLASHING AROUND WALL BOX FOR WEATHERPROOF INSTALLATION. BOTTOM MOUNT BOTTOM OF FAN @ 7'-4" A.F.F.
- ⑫ 16"x8" LOUVER AND DAMPER. 32,000 CFM. INSTALL 7'-4" A.F.F.
- ⑬ ELECTRICAL CONTRACTOR TO FURNISH AND INSTALL 60 AMP., 3POLE S/N FUSIBLE COMBINATION STARTER/DISCONNECT SWITCH. FUSE AS PER NAMEPLATE DATA. INSTALL 5'-0" ABOVE FINISHED FLOOR.
- ⑭ 2-4" CONDUITS FOR FUTURE TELECOMMUNICATIONS, FIBER OPTIC, ETC. PROVIDE UTILITY MARKER. STUB OUT 10'-0" AND CAP.
- ⑮ SEE DETAIL "ELECTRICAL SERVICE TO SPEC BUILDING", SHEET ME-3 FOR INSTRUCTIONS FOR POWER TO BUILDING AND FOR FUTURE POWER TO BUILDING.
- ⑯ PROVIDE ONE - 2.5°C FOR PANELBOARD AA TO UTILITY TRANSFORMER PAD.

