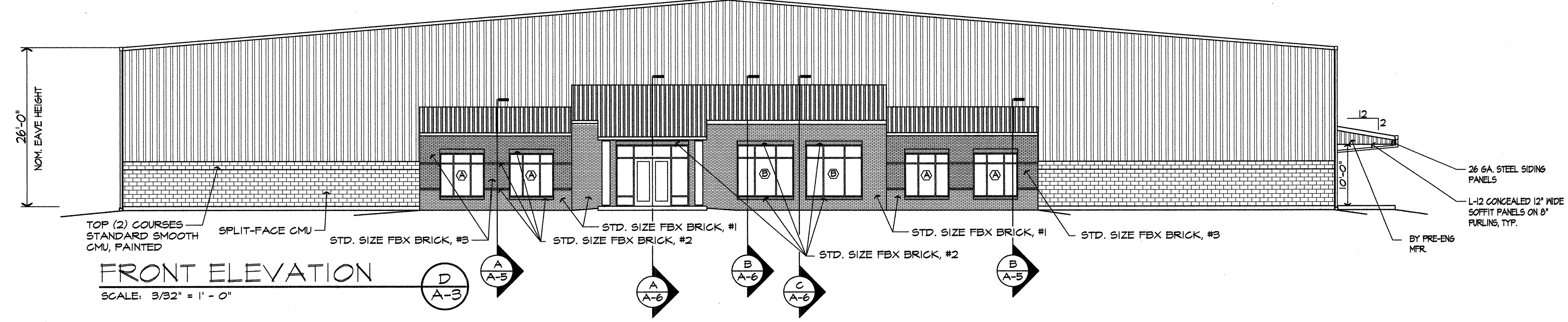
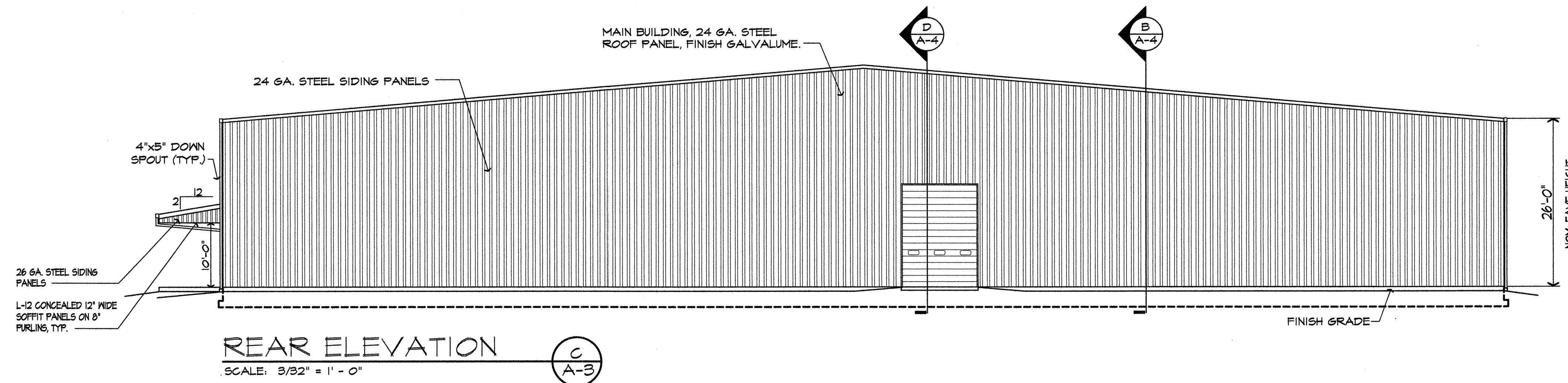
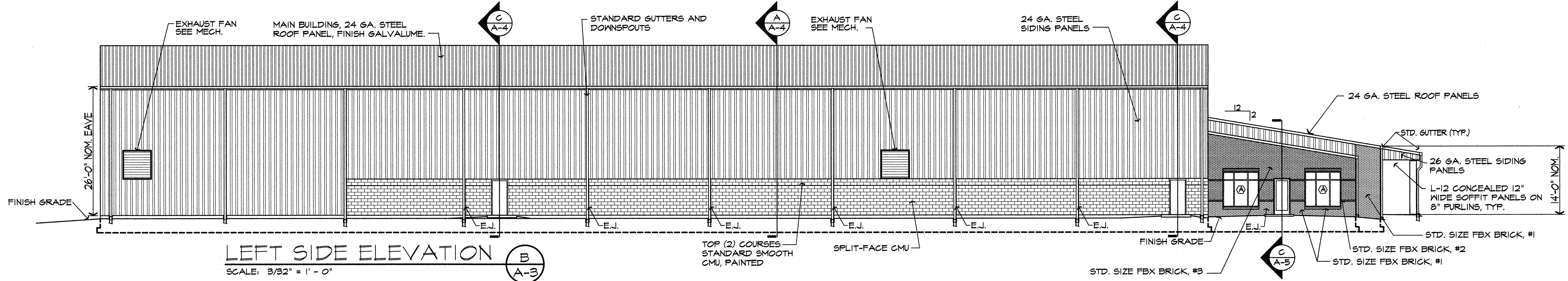
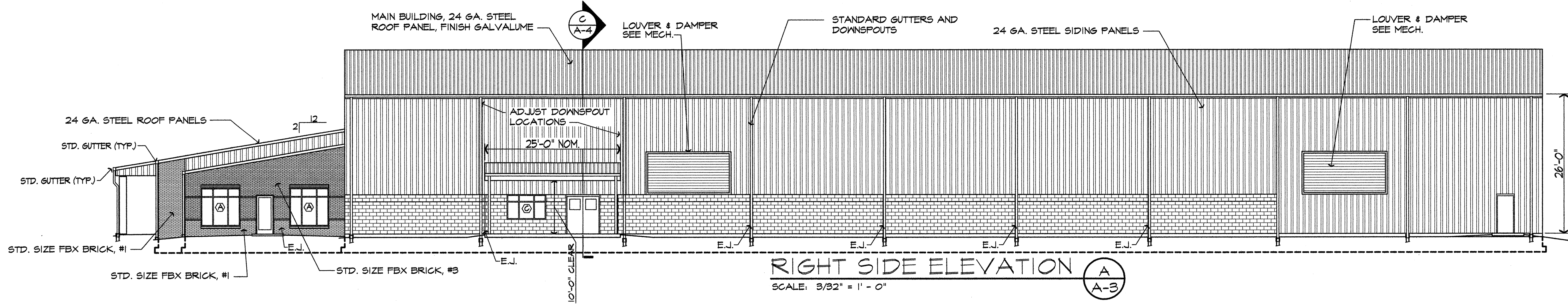


**SPECULATIVE BUILDING
MMRC
DEVELOPMENT AUTHORITY**



EXTERIOR BUILDING FINISHES

- FRONT OFFICE**
- WALL PANELS - 24 GA. STEEL SIDING PANELS, COLOR "SIERRA TAN", KYNAR 500 FINISH, OR APPROVED EQUAL.
 - ROOF PANELS - 24 GA. STEEL ROOF PANELS, COLOR "SIERRA TAN", KYNAR 500 FINISH, OR APPROVED EQUAL.
 - ALL WINDOW AND DOOR GLAZING TO BE "SOLARBAN R-100 (2) WITH CLEAR" BY PFG OR APPROVED EQUAL.
 - ALL WINDOW AND DOOR FRAMES TO BE DARK BRONZE FINISH.
 - BRICK #1 - STD. SIZE FBX BRICK, BELDEN "TUMBLEWEED VELOUR" w/ Flamingo BRIXMENT B-500 MORTAR.
 - BRICK #3 - STD. SIZE FBX BRICK, BELDEN "BEACON GREY VELOUR" w/ Flamingo BRIXMENT C-380 MORTAR.
 - BRICK #2 - ALL ROWLOCKS, SOLDIER COURSE AND ACCENT BANDS - BELDEN "MODULAR ALASKA WHITE VELOUR A" w/ Flamingo BRIXMENT C-380 MORTAR.
 - COLUMN COVERS - UNA-CLAD "ALMOND", KYNAR 500 FINISH OR APPROVED EQUAL.
- MAIN BUILDING**
- CMU MAINSCOTING - SPLIT-FACE "BUFF" COLOR, TOP (2) COURSES, SMOOTH-FACE, PAINTED TO MATCH BRICK #2, GLIDDEN #A0736 WOODWIND OR CUSTOM MATCH.
 - WALL PANELS - 24 GA. STEEL SIDING PANELS, COLOR "SKY BLUE", KYNAR 500 FINISH, OR APPROVED EQUAL.
 - ROOF PANELS - 24 GA. STEEL ROOF PANELS, GALVALUME FINISH.
 - CANOPY AT SIDE ENTRANCE - 24 GA. STEEL ROOF AND WALL PANELS, COLOR "SIERRA TAN", KYNAR 500 FINISH, OR APPROVED EQUAL.
 - TRIM, GUTTERS AND DOWNSPOUTS - COLOR "SIERRA TAN", OR APPROVED EQUAL.
 - HOLLOW METAL DOORS/FRAMES AND SECTIONAL DOOR - DARK TAN.

DATE	REVISION	BY

PROJECT NO. 2094-30
DESIGNED BY: BLL/MGF
DRAWN BY: BLL/MGF
CHECKED BY: MGF
REVIEWED BY: MGF
DATE: OCT. 2011
SCALE: AS NOTED

**Engineers
Architects
Planners**

**MSE
OF KENTUCKY, INC.**

624 Weathersby Way
Lexington, KY 40503
www.msekex.com
Phone: (606)223-6684
Fax: (606)223-2687